

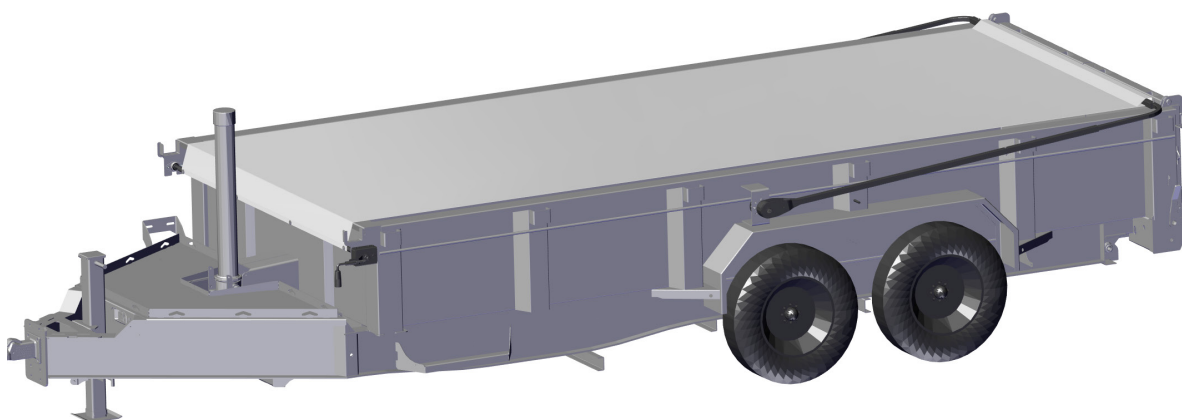


TARP SYSTEMS & ACCESSORIES

READ BEFORE INSTALLING

P/N 1132784 Rev A

DIAMOND C LONG ARM TARP SYSTEM OWNER'S MANUAL



***Steel Arm System for Diamond C -
LPT and MDT Dump Trailers***

2309 SHUR-LOK STREET • YANKTON, SD 57078-0713
PHONE: 1-800-SHUR-LOK (1-800-474-8756) • FAX: 1-605-665-0501
www.SHURCO.com

SHOP ONLINE: www.SHOPSHURCO.com

Scan QR Code

ORDER
TERMS AND CONDITIONS



WARRANTY



PATENTS



SHUR-CO[®], LLC SERVICE AND DISTRIBUTION CENTERS

SHUR-CO[®] CORPORATE HQ
2309 Shur-Lok Street, Yankton
800-729-2969
Fax: 605-665-0501

SHUR-CO[®] of FLORIDA
3353 SE Gran Park Way, Stuart
800-327-8287
Fax: 772-287-0431

SHUR-CO[®] of CANADA
490 Elgin Street, Unit 2
Brantford, Ontario N3S 7P8
800-265-0823
Fax: 519-751-3997

SHUR-CO[®] of IDAHO
921 Garber Street, Caldwell
208-455-1046
Fax: 208-455-1046

SHUR-CO[®] of OHIO
4676 Lynn Road, Rootstown
866-356-0242
Fax: 330-297-5599


SHUR-CO[®] of ILLINOIS
3993 E. Mueller Avenue, Decatur
866-356-0246
Fax: 217-877-8270

SHUR-CO[®] of NORTH DAKOTA
1746 4th Avenue. NW, West Fargo
877-868-4488
Fax: 701-277-1284

SHUR-CO[®] UK LIMITED
Unit 41, Rochester Airport Estate
Laker Road
Rochester, Kent ME1 3QX

MESSAGE TO OWNERS

Thank you for buying this tarping system from Shur-Co®. We appreciate your confidence in our products. Please read and thoroughly understand this manual before installing and/or operating this system.

Pay particular attention to important safety and operating instructions, as well as warnings and cautions. The hazard symbol  is used to alert users to potentially hazardous conditions and is followed by caution, warning or danger messages.

Failure to READ AND FOLLOW INSTRUCTIONS could result in failure of your tarping system and/or personal injury. Your trailer requirements may, however, call for minor variations to these instructions.

Please inspect your tarping system periodically. Repair or replace worn or damaged parts to your system.

QUESTIONS? CALL OUR HELP LINE:

1-800-327-8287

MON-FRI 8 AM-5 PM EASTERN TIME



SAFETY INSTRUCTIONS

1. Always wear safety glasses during installation and operation.
2. Stay clear of moving parts.
3. No other use of this system is authorized, except as designed.

We at Shur-Co® are concerned with your safety and the safety of all those operating this system. Therefore, we have provided safety decals at various locations on your tarping system. Keep decals as clean as possible at all times. Replace any decal that has become worn or damaged, painted over or otherwise difficult to read. Replacement decals are available through Shur-Co® dealers.

RUST PREVENTION

To prevent rust, paint all exposed metal, such as weld seams and/or metal exposed by grinding or cutting, with corrosion-resistant paint.

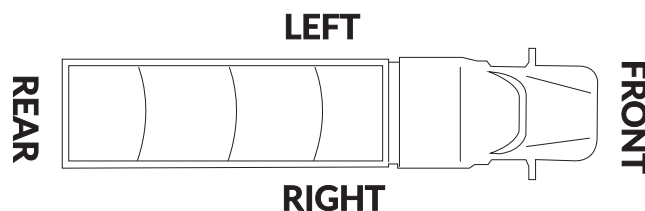
REQUIRED TOOLS

1. Wrenches - 7/16", 1/2", 9/16"
2. Ratcheting Socket Wrench
3. Sockets - 7/16", 1/2", 9/16"
4. Allen Wrenches - 5/32"
5. Drill
6. 1/4" Electric or Air Impact Driver w/5/16" Nut Driver
7. Retaining Ring Pliers

MAINTENANCE

- Spray all bearings with penetrating oil as needed.
- Grease spring bearings as needed.
- Brush springs with steel brush weekly to remove dirt, and spray with penetrating oil.
- Tighten loose bolts.
- Make sure arms are not hitting sides of box. Replace damaged/bent arms.
- Replace worn or broken springs.
- Replace/repair worn or damaged tarps.

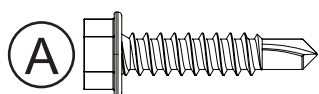
VEHICLE ORIENTATION



**PLEASE READ THE COMPLETE MANUAL BEFORE
PROCEEDING WITH INSTALLATION OR USE OF THE TARPING SYSTEM.**

Contact Information.....	2
Product Guide.....	3
Table of Contents.....	4
Hardware Identification.....	4
Installation Instructions	
1: DIRECT DRIVE	
a) Direct Drive Parts & Hardware	5
b) Direct Drive Installation	6
2: ARM & TARP	
a) Arm Parts & Hardware	7
b) Arm Installation	7
c) Tarp Installation	9
3: OPERATION.....	10
4: REPLACEMENT PARTS.....	11

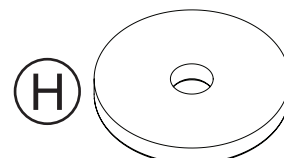
Hardware Identification



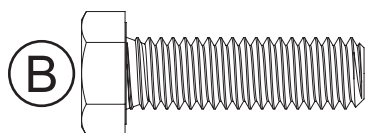
Self-Tapping Screw - 1"



Nut - 3/8"



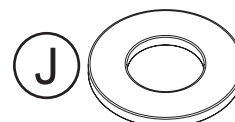
Fender Washer - 1"



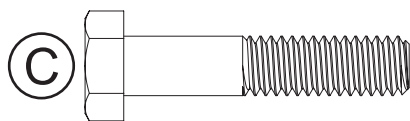
Hex Head Cap Screw - 3/8" x 1"



Nylon Lock Nut - 5/16"



Washer - 3/8"



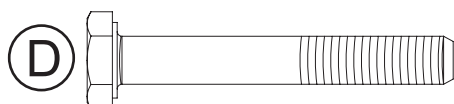
Hex Head Cap Screw - 5/16" x 1-1/2"



Nylon Lock Nut - 1/4"



Lock Washer - 3/8"



Hex Head Cap Screw - 1/4" x 1-3/4"

DIRECT DRIVE - PARTS & HARDWARE

Item	Part #	Description	Item	Part #	Description
1.	1800042	Bearing - 3/4"	B.	N/A	Hex Head Cap Screw - 3/8" x 1"
2.	1800045	Shaft Collar - 3/4"	C.	N/A	Hex Head Cap Screw - 5/16" x 1-1/2"
3.	1810353	Roller Bar - 91.25"	E.	N/A	Nut - 3/8"
	1811763	Roller Bar - 67.5"	F.	N/A	Nylon Lock Nut - 5/16"
	1811764	Roller Bar - 84.5"	J.	N/A	Washer - 3/8"
4.	1810354	Direct Drive Crank	K.	N/A	Lock Washer - 3/8"

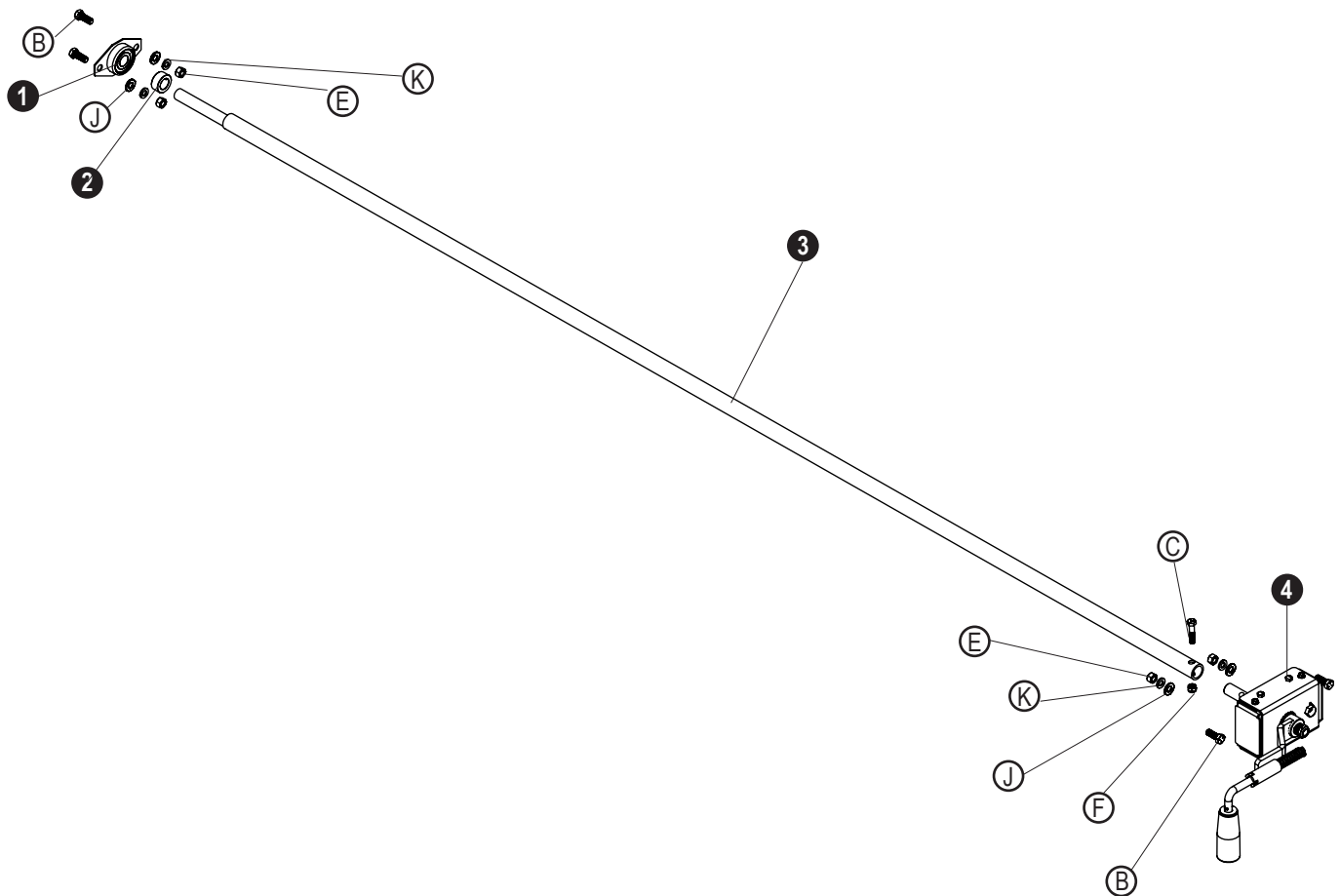
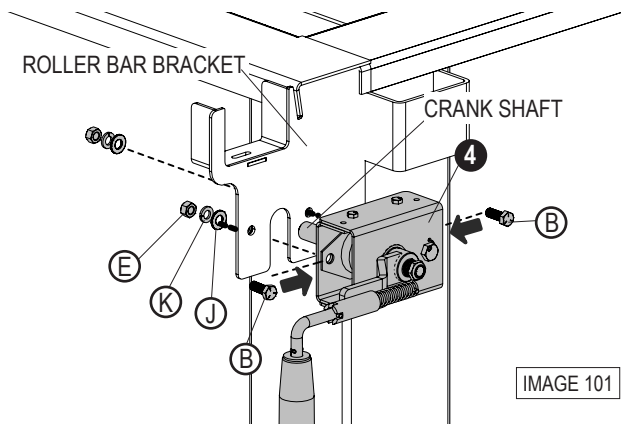


IMAGE 100

STEP 1: MOUNT CRANK BOX

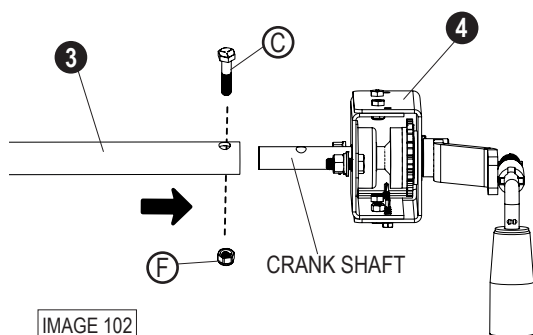
- On the trailer's left side, insert the shaft of the **crank (4)** through the outside of the roller bar bracket.
- From inside the crank box, insert two **1" screws (B)** through the crank box and roller bar bracket.
- Secure with **3/8" washers (J)**, **3/8" lock washers (K)** and **3/8" nuts (E)**.

**WARNING**

Do not operate the direct drive crank system while elevated or on unstable surfaces. Operate only when standing directly on the ground.

STEP 2: MOUNT ROLLER BAR

- Align and slide the **roller bar (3)** onto the crank shaft.
- Fasten the crank shaft to the axle with a **1-1/2" screw (C)** and **5/16" nut (F)**.

**STEP 3: ASSEMBLE CRANK BOX**

Secure the four **#12 x 3/4" self-drilling screws** and two **side panels**, supplied with the **crank (4)**, to the crank box as shown in Image 103.

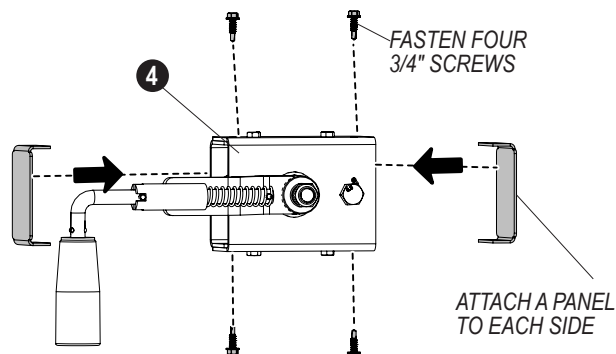
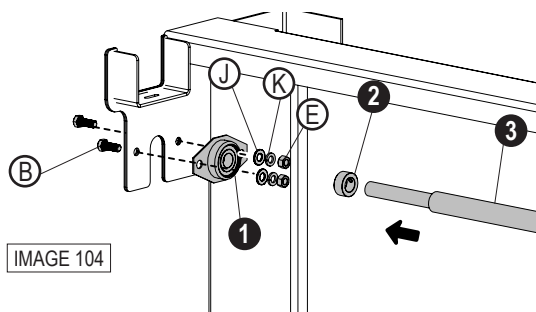


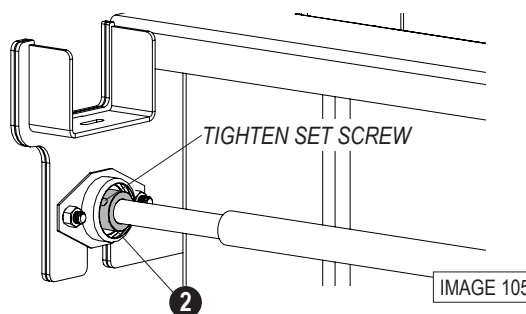
IMAGE 103

STEP 4: MOUNT RIGHT SIDE ROLLER BAR

- Loosely assemble the **bearing (1)** to the inside of the roller bar bracket using two **1" screws (B)**, **3/8" washers (J)**, **3/8" lock washers (K)** and **3/8" nuts (E)**.
- Insert the **roller bar (3)** through the **collar (2)** and into the **bearing (1)**.

**STEP 5: TIGHTEN COLLAR & HARDWARE**

- Tighten the set screw on the **collar (2)**.
- Ensure all hardware is securely tightened.



PIVOT ARM - PARTS & HARDWARE

Item	Part #	Description	Item	Part #	Description
1.	1810351	Cross Bar - 88"	A.	N/A	Self-Tapping Screw - 1"
	1811760	Cross Bar - 67.5"	B.	N/A	Hex Head Cap Screw - 3/8" x 1"
	1811761	Cross Bar - 84.5"	D.	N/A	Hex Head Cap Screw - 1/4" x 1-3/4"
2.	1810352	Upper Arm	E.	N/A	Nut - 3/8"
3.	1811757	MDT Pivot Arm - R	G.	N/A	Nylon Lock Nut - 1/4"
	1810397	LPT 12' Pivot Arm - R	H.	N/A	Fender Washer - 1"
	1810373	LPT 14' to 16' Pivot Arm - R	J.	N/A	Washer - 3/8"
4.	1810758	MDT Pivot Arm - L	K.	N/A	Lock Washer - 3/8"
	1810398	LPT 12' Pivot Arm - L			
	1810374	LPT 14' to 16' Pivot Arm - L			
5.	1704561	Warning Decal - Spring Tension			
6.	1704562	Warning Decal - Power Lines			

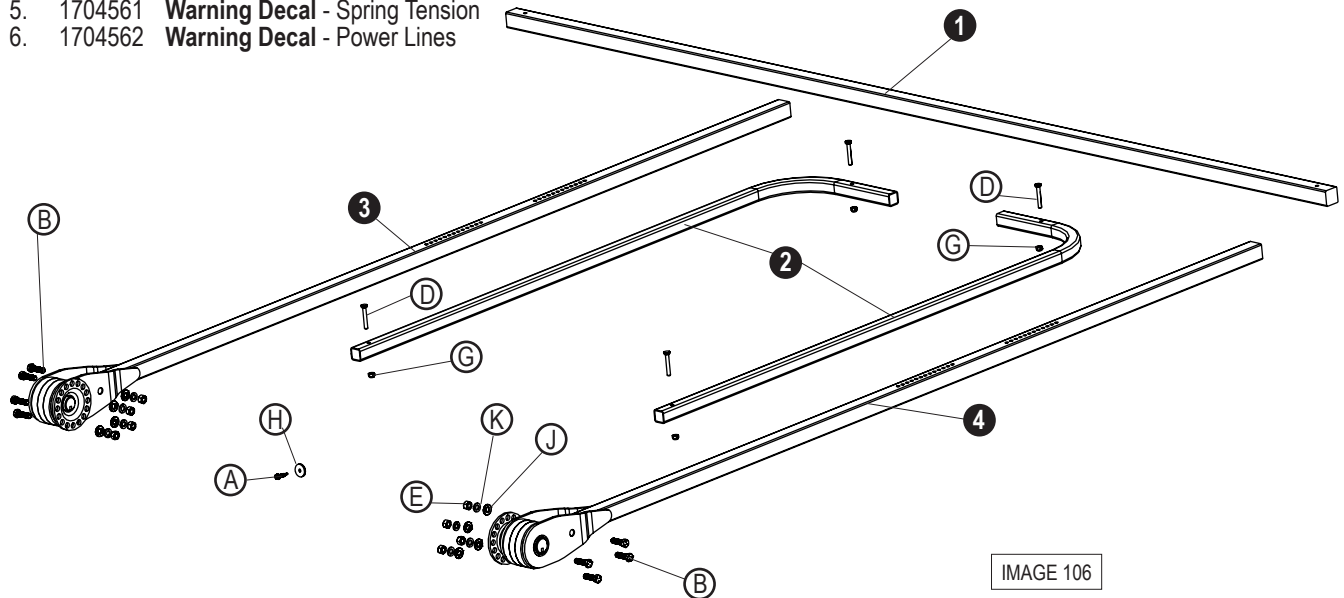


IMAGE 106

Pivot Arm Installation

STEP 1: POSITION LEFT PIVOT ARM

- Align the holes in the pivot base of the **left pivot arm (4)** with the pivot bracket on the left side of the trailer.
- Position the arm with the pivot spring notch 45 degrees counter-clockwise, as shown in Image 107.

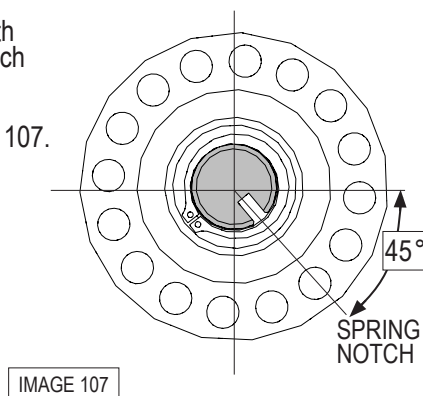


IMAGE 107

STEP 2: PLACE LEFT PIVOT ARM

Fasten the **left pivot arm (4)** to the trailer with 1" screws (B), 3/8" washers (J), 3/8" lock washers (K) and 3/8" nuts (E).

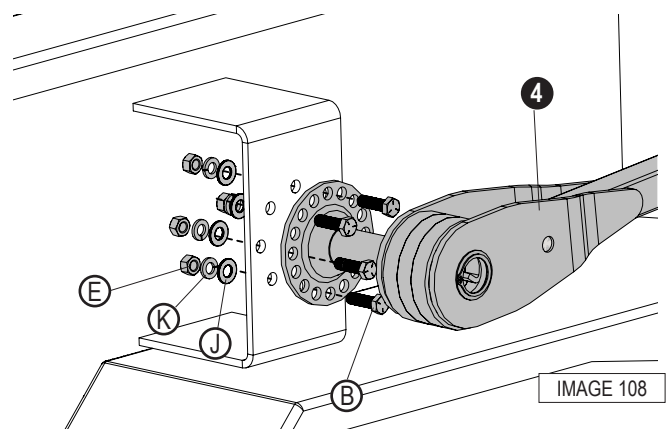
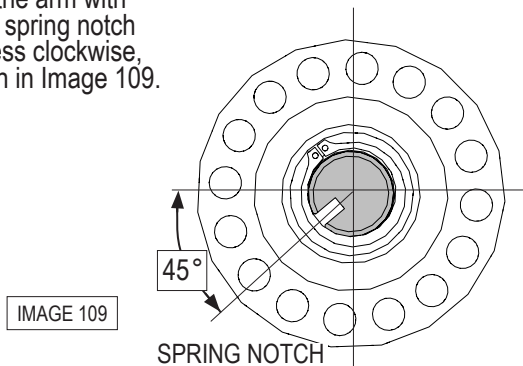


IMAGE 108

STEP 3: POSITION RIGHT PIVOT ARM

- Align the holes in the pivot base of the **right pivot arm (3)** with the pivot bracket on the right side of the trailer.
- Position the arm with the pivot spring notch 45 degrees clockwise, as shown in Image 109.

**STEP 4: PLACE RIGHT PIVOT ARM**

Fasten the **right pivot arm (3)** to the trailer with **1" screws (B)**, **3/8" washers (J)**, **3/8" lock washers (K)** and **3/8" nuts (E)**, as shown in Image 110.

NOTE: After installing the spring and arms, ensure the open tarp position does not allow the springs to exceed a 180° rotation, which can cause premature fatigue and reduce the lifespan of the spring.

NOTE: While installing the arm, the spring will catch. From this point, rotate the spring to a maximum of 180°. The pivot pin must be rotated counter-clockwise on the left side and clockwise on the right side so the spring load does not exceed more than 180°. If more load is applied, spring damage may occur.

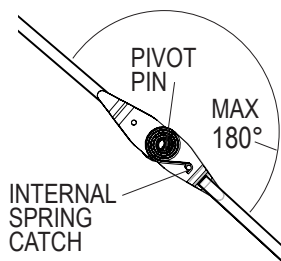
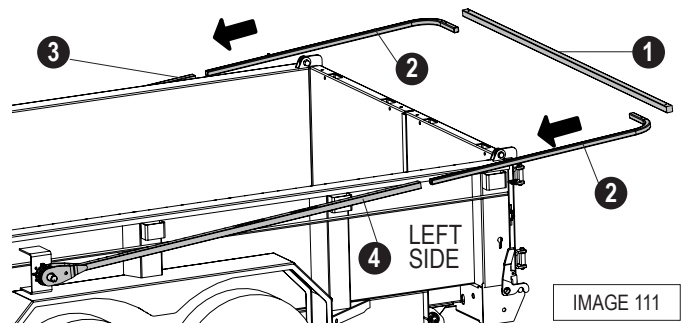


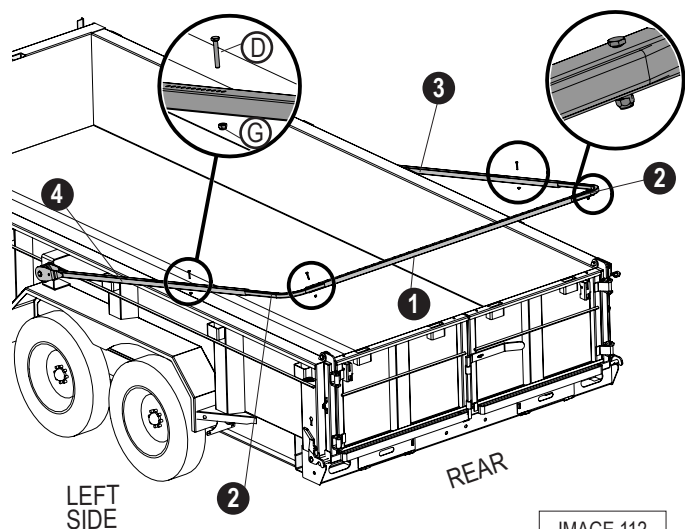
IMAGE 110

STEP 5: PLACE ARMS

- On the left, slide an **upper arm (2)** into the **left pivot arm (4)** and align holes.
- On the right, slide the other **upper arm** into **right pivot arm (3)**.

**STEP 6: FASTEN ARMS**

- Fasten **upper arm (2)** to **left pivot arm (4)** with **1-3/4" screw (D)** and **1/4" nut (G)**, see Image 112.
- On the right, fasten the other **upper arm** to **right pivot arm (3)**, with **1-3/4" screw (D)** and **1/4" nut (G)**.
- Attach the **cross bar (1)** to the two **upper arms** with two **1-3/4" screws (D)** and two **1/4" nuts (G)**.



STEP 7: INSTALL TARP ON CROSS BAR

- a) Disassemble one side of the **cross bar (1)**.

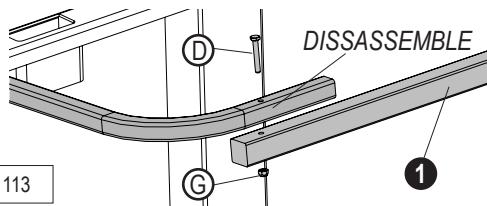


IMAGE 113

- b) Locate the empty sleeve in the rear end of the tarp.
 c) Position one corner of the tarp onto the **cross bar (1)**, and guide it onto the bar from one end to the other.
 d) Reassemble the cross bar to the upper arm.

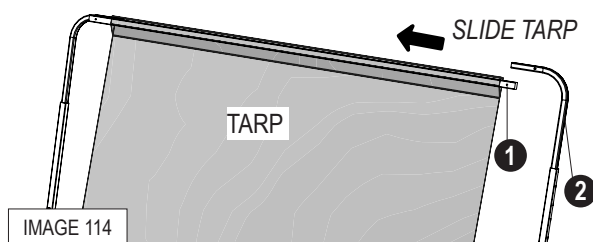


IMAGE 114

STEP 8: PREPARE TARP

- a) Spread the tarp out with the front edge across the roller bar.
 b) Straighten the tarp by starting at the center and working towards the edges, pulling the tarp tight.

STEP 9: INSTALL TARP ON ROLLER BAR

Ensure the tarp is centered on the trailer. Fasten four **1" self tapping screws (A)** through four **1" fender washers (H)** to secure the tarp to the roller bar.

NOTE: The tarp must wind open in the direction indicated in Image 115. To prevent debris from entering the axle, position the tarp to roll open off the top of the axle toward the rear of the box.

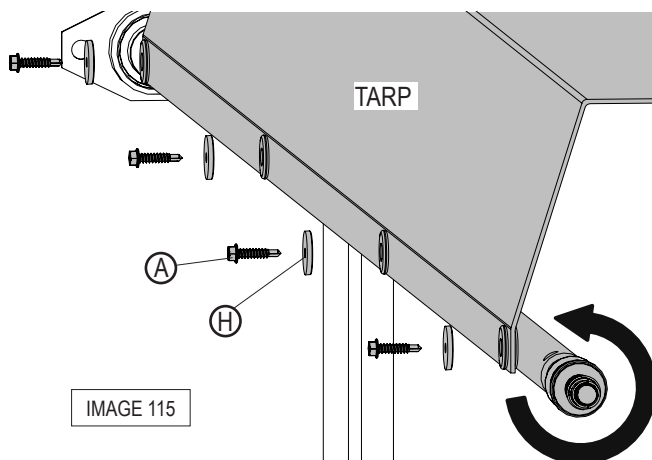


IMAGE 115

STEP 10: PLACE SAFETY DECALS

Ensure surface area near the crank box is clean and dry. Remove the backing from the two **warning decals (5, 6)**, and place them in a visible location, as shown in Image 116.

Regularly inspect the decals for wear and adherence to ensure ongoing safety. Replace if necessary.

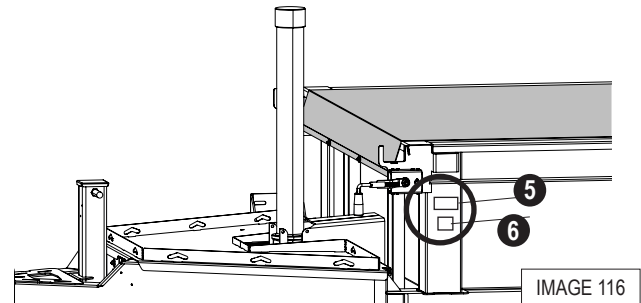


IMAGE 116

! WARNING

Operate the tarp system only when stationary, away from power lines, and with no one nearby. Avoid the return arm and moving parts due to constant spring tension. Failure to follow these warnings could result in damages, serious injury, or death.

! WARNING

- Return arm under **CONSTANT** spring tension.
- Stay clear of return arms and all moving parts.
- Read manual thoroughly before any disassembly.
- Failure to follow warnings could result in serious injury or death.

P/N 1704561

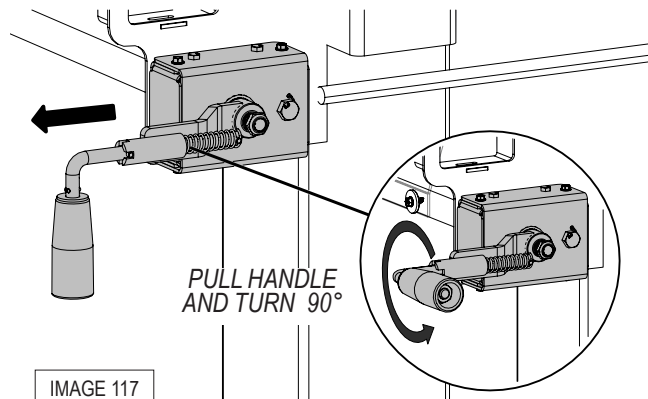
! WARNING

- **DO NOT OPERATE TARP SYSTEM BENEATH POWER LINES.**
- **DO NOT OPERATE SYSTEM WHILE MOVING.**
- **MAKE SURE NO ONE IS NEAR TARP SYSTEM WHILE OPERATING.**
- **FAILURE TO FOLLOW THESE WARNINGS COULD RESULT IN DAMAGES, SERIOUS INJURY, OR DEATH.**

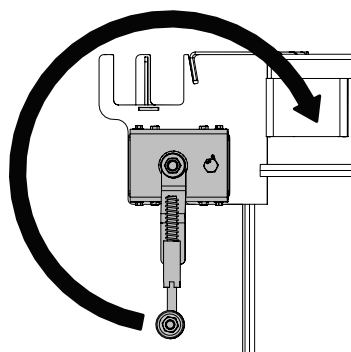
P/N 1704562

STEP 1: UNLOCK CRANK HANDLE

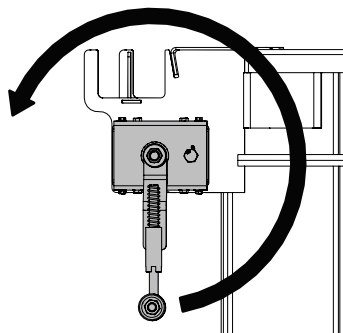
Unlock the crank handle by pulling it away from the crank box and rotating it 90 degrees.

**STEP 2: CLOSE TARP**

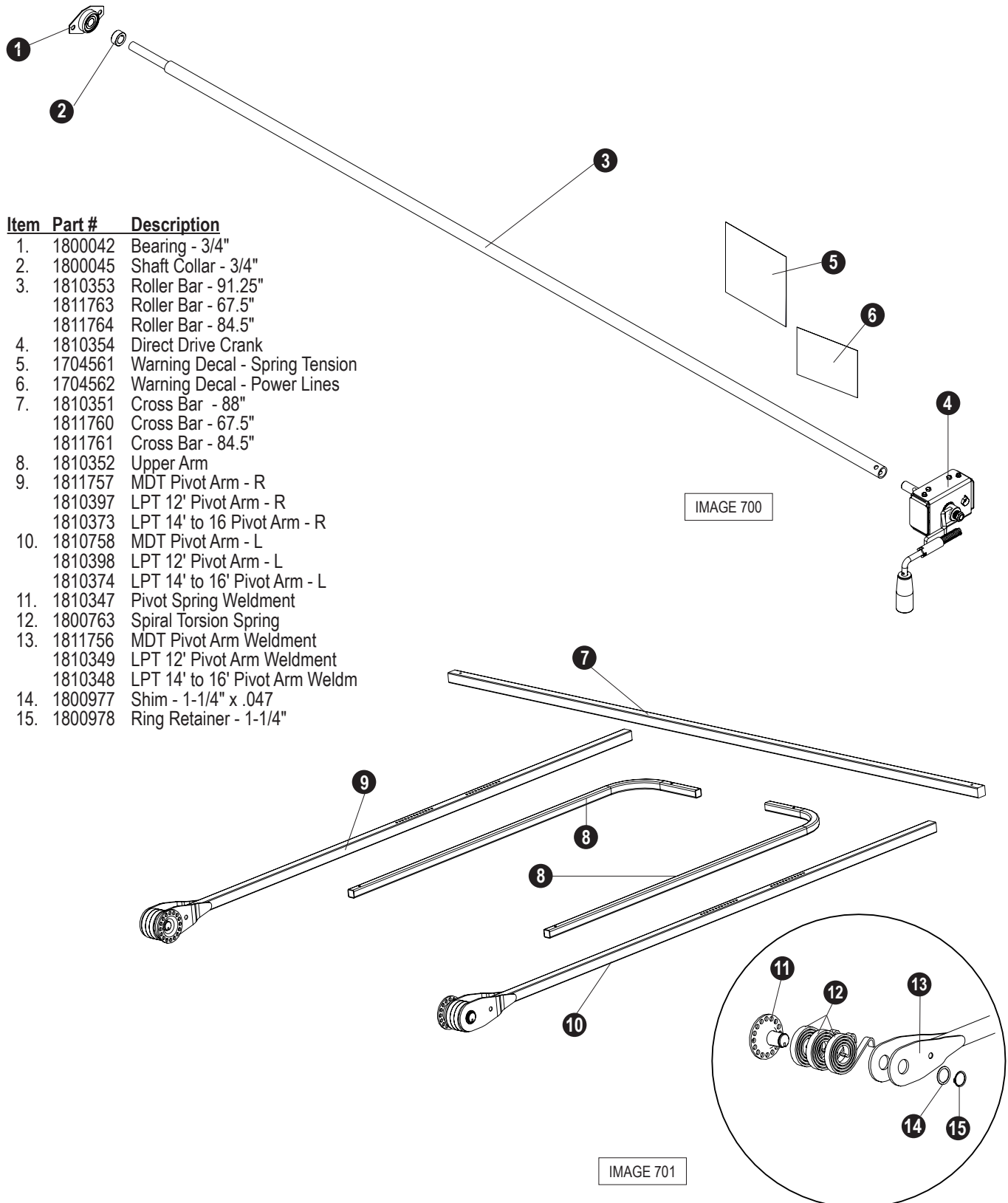
Rotate the handle clockwise to cover the trailer.

**STEP 3: OPEN TARP**

Rotate the handle counter-clockwise to uncover the trailer.



NOTE: When operation is complete, rotate the crank handle back to the locked position.



2309 SHUR-LOK STREET • YANKTON, SD 57078-0713
PHONE: 1-800-SHUR-LOK (1-800-474-8756) • FAX: 1-605-665-0501
www.SHURCO.com
