

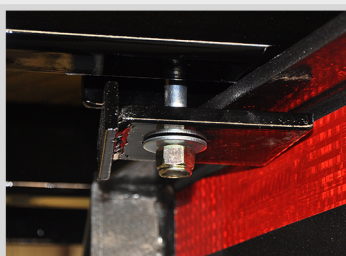
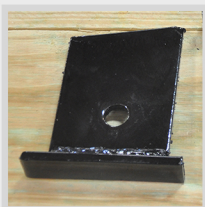
DECK ON THE NECK

Step by Step Installation Instructions



1 Place the deck on the neck of the trailer, ensuring the deck is centered on the neck. Make sure the back of the deck is flush with the rear neck uprights.

3



Attach clamp piece #2 on the bottom of the I-Beam neck flange using the supplied grade 8 bolt, flat washer, and nylock nut. Ensure the angle of piece #2 runs parallel with the angle of the I-Beam.

2



Place clamp piece #1 over inside lip of channel cross-member and top of I-Beam flange. One at front each side of doubled cross-member and one on 2nd cross-member from rear of each side.



4

Torque all four clamp bolts to 60ft. lbs.

PARTS LIST

Clamp piece #1 - 4pcs
Clamp piece #2 - 8pcs
Grade 8 bolt - 8pcs
Grade 8 Nylock - 8pcs
Flat washer - 16pcs

www.diamondc.com



903.572.2834

see the difference

DIAMOND C
TRAILERS